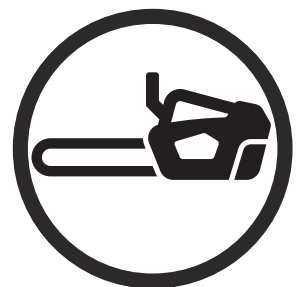


Workshop manual

T540i XP®



English

Contents

1 Introduction

1.1 Document description.....	3
1.2 Target group.....	3
1.3 Revisions.....	3
1.4 Safety.....	3
1.5 Servicing tools.....	3

2 Safety

2.1 Safety definitions.....	4
2.2 General safety instructions.....	4
2.3 Symbols on the product.....	4
2.4 Special safety instructions.....	4

3 Servicing data

3.1 Servicing data T540i XP.....	5
----------------------------------	---

4 Servicing tools

4.1 Servicing tools.....	7
--------------------------	---

5 Repair instructions

5.1 To clean and examine the product parts.....	8
5.2 Drive sprocket and guide bar.....	8
5.3 Chain tensioner	9
5.4 Crankcase.....	10
5.5 Power trigger.....	11
5.6 Front hand guard.....	13
5.7 Motor and control unit.....	13
5.8 User interface.....	16
5.9 Chain oil tank.....	17
5.10 Chain brake.....	17

6 Troubleshooting

6.1 Diagnostic tools.....	20
6.2 Troubleshooting of the product.....	21
6.3 Troubleshooting of the battery and battery charger.....	23

7 Technical data

7.1 Technical data.....	25
-------------------------	----

1 Introduction

1.1 Document description

This manual gives a full description of how to do maintenance and repair on the product. It also gives safety instructions that the personnel must obey.

1.2 Target group

This manual is for personnel with a general knowledge of how to do repair and do servicing. All personnel that do repair or do servicing on the product must read and understand the manual.

1.3 Revisions

Changes to the product can cause changes to the maintenance work and spare parts. Separate information is sent out for each change.

Read the manual together with all received information about changes to maintenance and spare parts for the product.

1.4 Safety



WARNING: All personnel that repair or do servicing on the product must read and understand the safety instructions in this workshop manual.

1.5 Servicing tools

The manual gives information about necessary servicing tools. Always use original tools from Husqvarna.

2 Safety

2.1 Safety definitions

Warnings, cautions and notes are used to point out specially important parts of the manual.



WARNING: Used if there is a risk of injury or death for the operator or bystanders if the instructions in the manual are not obeyed.



CAUTION: Used if there is a risk of damage to the product, other materials or the adjacent area if the instructions in the manual are not obeyed.

Note: Used to give more information that is necessary in a given situation.

2.2 General safety instructions



WARNING: Apply a new warning label if a warning symbol on the product is damaged or missing.

2.3 Symbols on the product



Fill with chain oil



Start/Stop



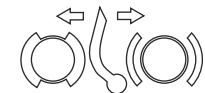
savE / Battery save mode



Warning lamp/Fault indicator



Indication of chain direction



Chain brake

2.4 Special safety instructions

2.4.1 To remove the battery

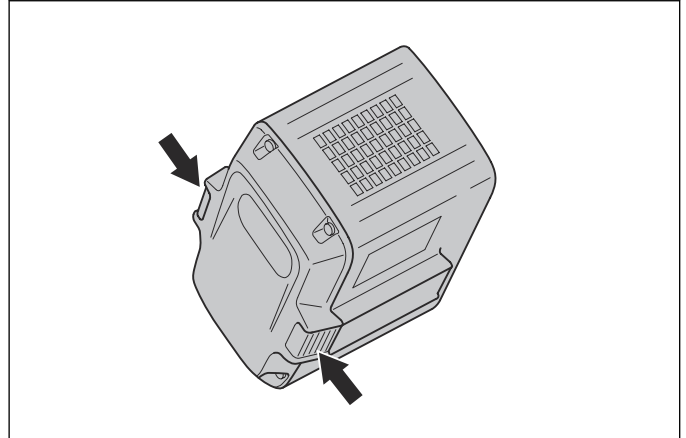


WARNING: Always remove the battery before you do repairs or do servicing on the product.



WARNING: Do not put the battery back until the product is assembled.

1. Press in the catches and remove the battery.



2.4.2 Cutting equipment safety



WARNING: Always remove the cutting equipment before you do repairs or do servicing on the product.



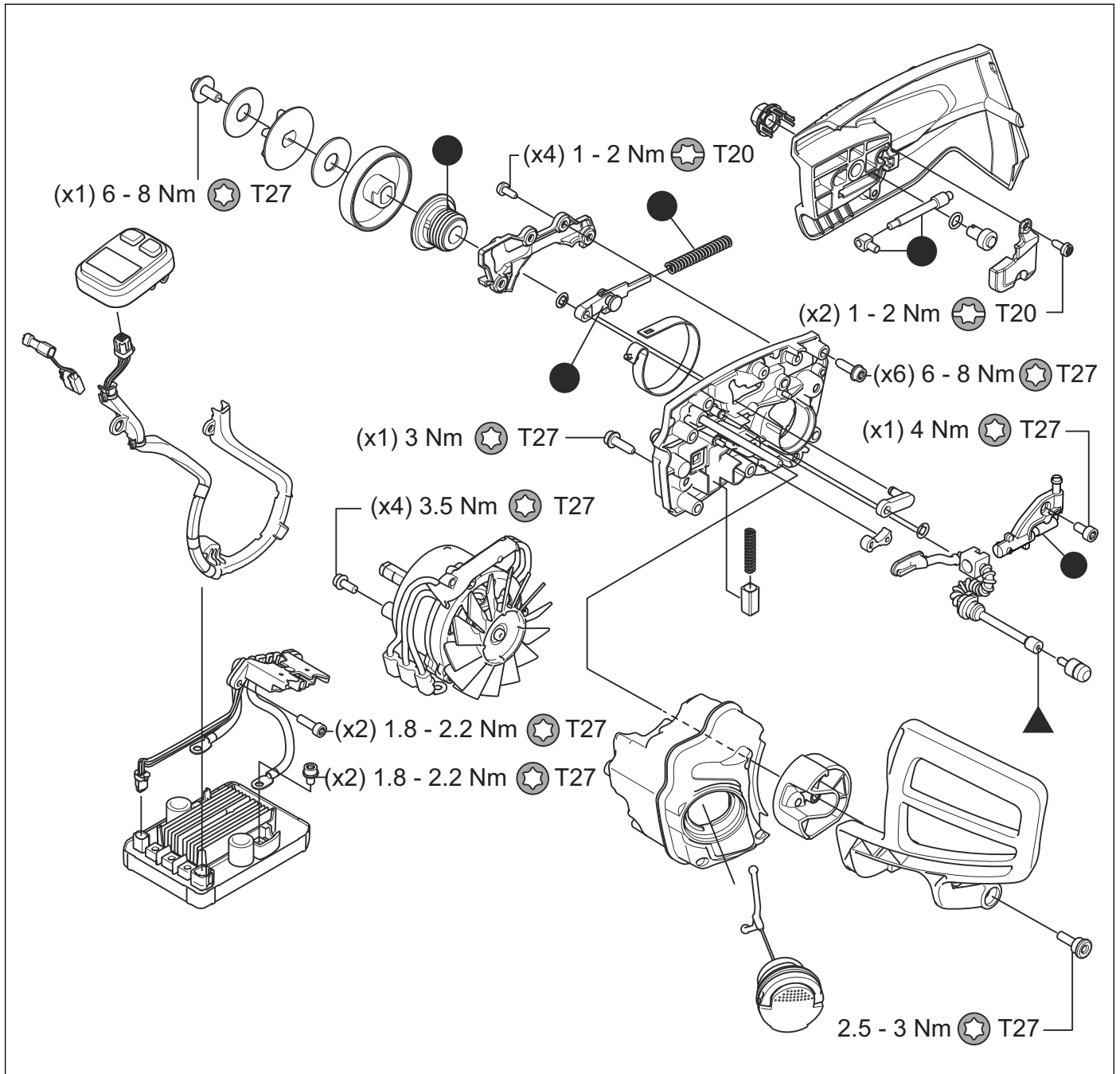
WARNING: Do not install the cutting equipment until the product is assembled.

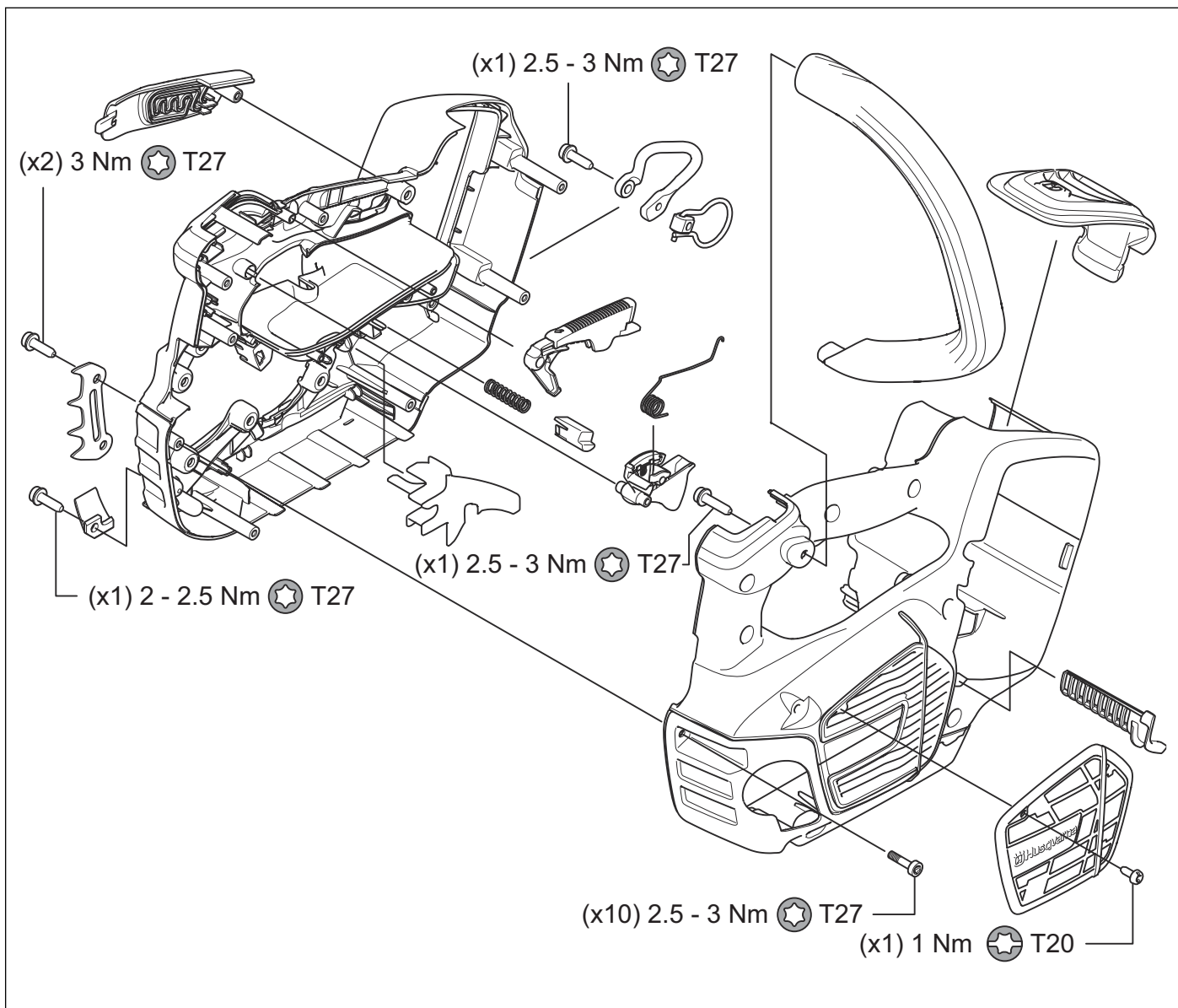
3 Servicing data

3.1 Servicing data T540i XP

• Lubricate with grease.

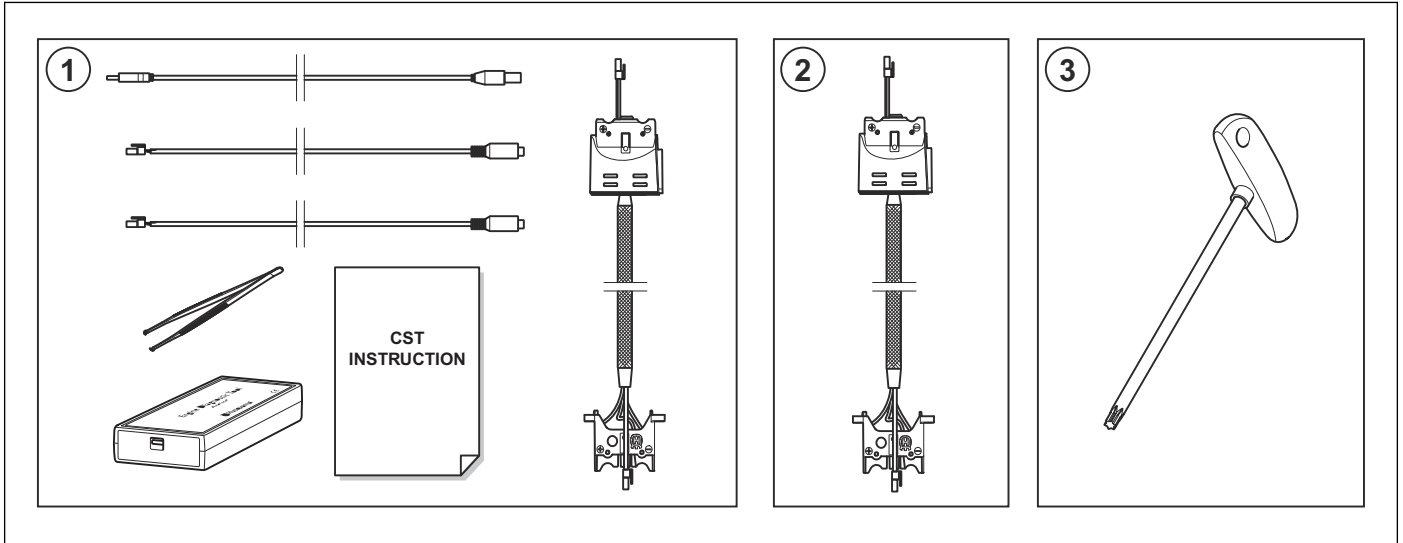
▲ Lubricate with chain oil.





4 Servicing tools

4.1 Servicing tools



Position	Description	Use	Article No.
1	Diagnostic tool kit	To do a check of the product and install updates to the firm-ware.	583 89 71-01
2	Adapter cable for battery products	To do a check of battery products with the diagnostic tool kit.	581 19 23-01
3	T-handle Torx, T20	To loosen or remove Torx screws.	412 36 49-01
3	T-handle Torx, T27	To loosen or remove Torx screws.	502 71 27-03

5 Repair instructions

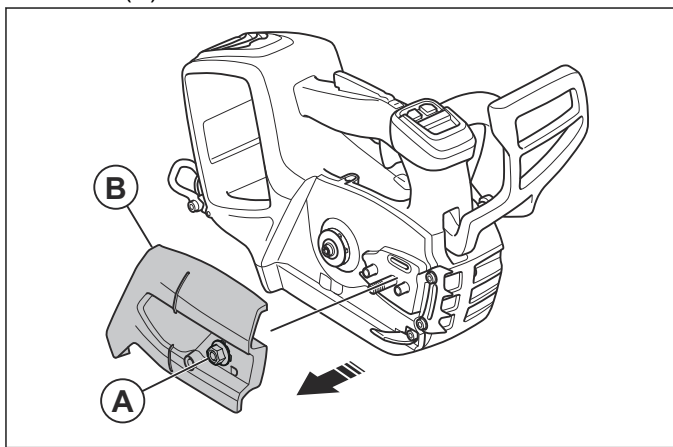
5.1 To clean and examine the product parts

- Clean and examine all parts fully. You find more instructions in the chapter for each part if special tools or procedures are necessary.
- Replace damaged or defective parts.
- Always use original spare parts.

5.2 Drive sprocket and guide bar

5.2.1 To remove and install the drive sprocket cover

1. Loosen the nut (A) and remove the drive sprocket cover (B).

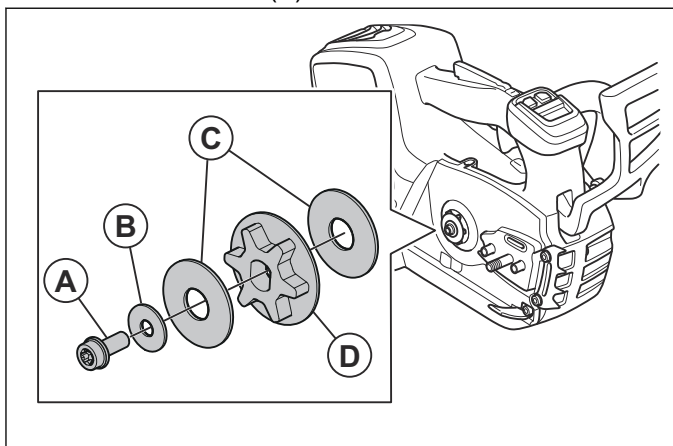


Note: The nut is attached to the drive sprocket cover.

2. Install in the opposite sequence.

5.2.2 To remove and install the drive sprocket

1. Remove the drive sprocket cover. Refer to *To remove and install the drive sprocket cover on page 8*.
2. Remove the guide bar and the saw chain.
3. Hold the drive sprocket with adjustable pliers and remove the screw (A).



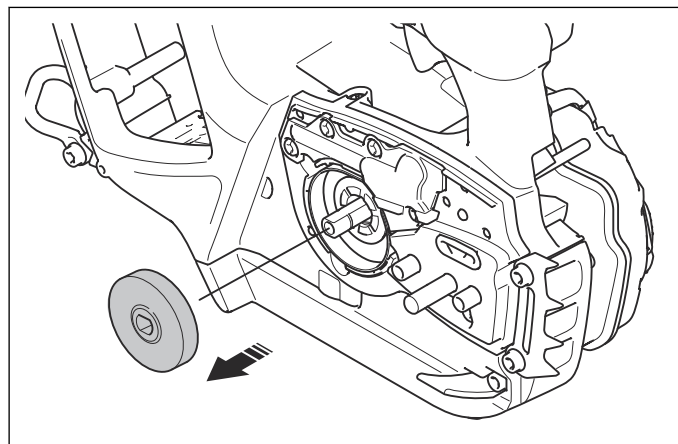
4. Remove the small washer (B), the large washers (C) and the drive sprocket (D).
5. Install in the opposite sequence.



CAUTION: The concave side of the large washers must point in the direction of the drive sprocket.

5.2.3 To remove and install the brake drum

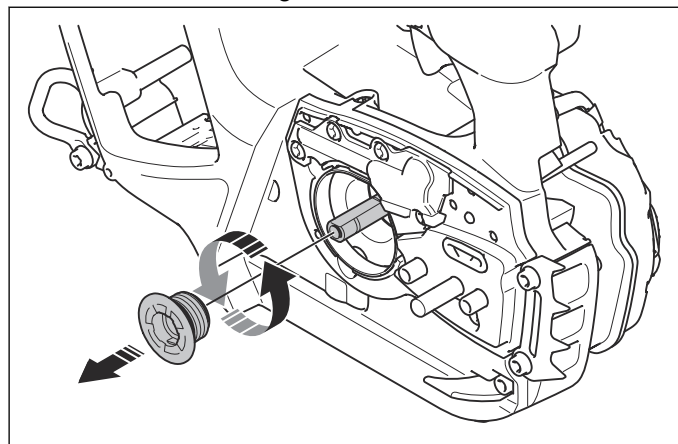
1. Remove the drive sprocket. Refer to *To remove and install the drive sprocket on page 8*.
2. Remove the brake drum.



3. Examine the brake drum for damage. Replace the brake drum if it is damaged.
4. Install in the opposite sequence.

5.2.4 To remove and install the worm gear

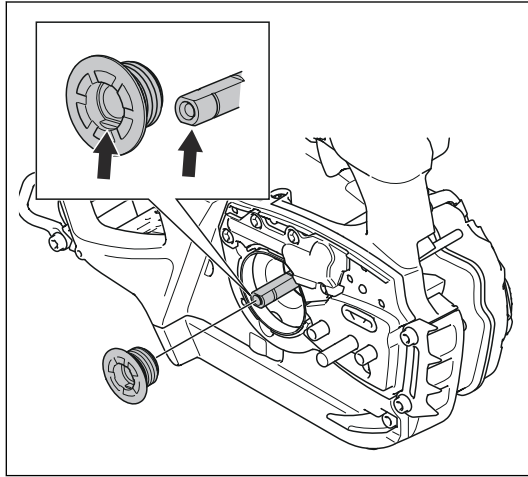
1. Remove the brake drum. Refer to *To remove and install the brake drum on page 8*.
2. Remove the worm gear.



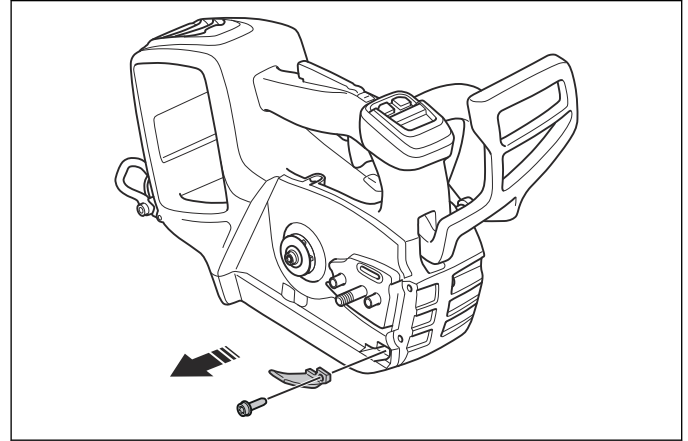
3. Examine the worm gear for wear and damage. Replace the worm gear if it is damaged.
4. Install in the opposite sequence.



CAUTION: Make sure that the flat surfaces in the worm gear are aligned with the flat surfaces on the motor axle.



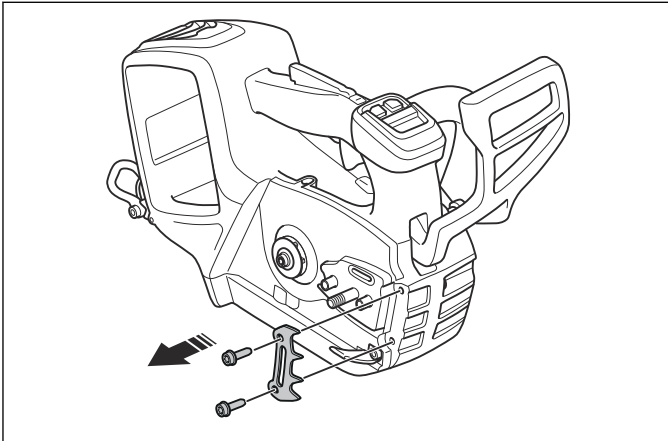
3. Remove the screw and the chain catcher.



4. Examine the chain catcher for wear and damages. Replace the chain catcher if it is worn or damaged.
5. Install in the opposite sequence.

5.2.5 To remove and install the spiked bumper

1. Remove the drive sprocket cover. Refer to *To remove and install the drive sprocket cover on page 8*.
2. Remove the guide bar and the saw chain.
3. Remove the 2 screws and the spiked bumper.



4. Examine the spiked bumper for wear and damage. Replace the spiked bumper if it is damaged.
5. Install in the opposite sequence.

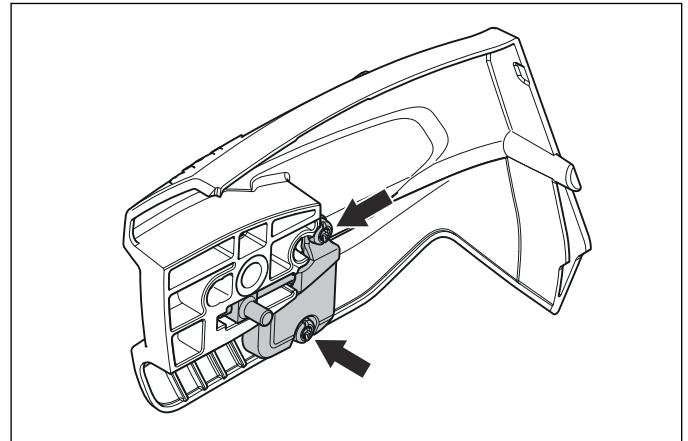
5.2.6 To remove and install the chain catcher

1. Remove the drive sprocket cover. Refer to *To remove and install the drive sprocket cover on page 8*.
2. Remove the guide bar and the saw chain.

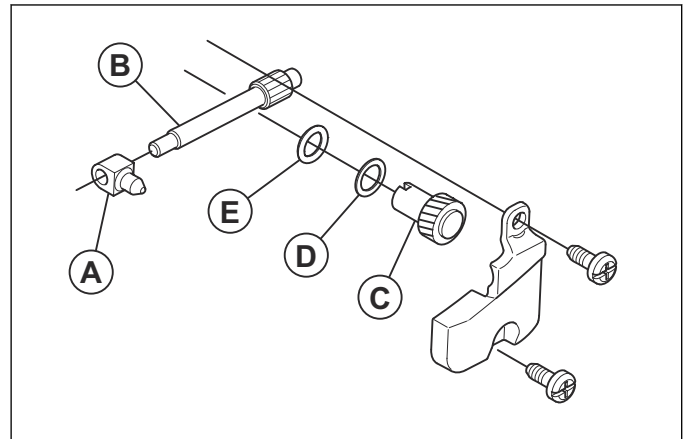
5.3 Chain tensioner

5.3.1 To disassemble and assemble the chain tensioner

1. Remove the drive sprocket cover. Refer to *To remove and install the drive sprocket cover on page 8*.
2. Remove the 2 screws and the chain tensioner cover.



3. Remove the chain tensioner (A), shaft (B), adjustment screw (C), washer (D) and O-ring (E) from the drive sprocket cover.

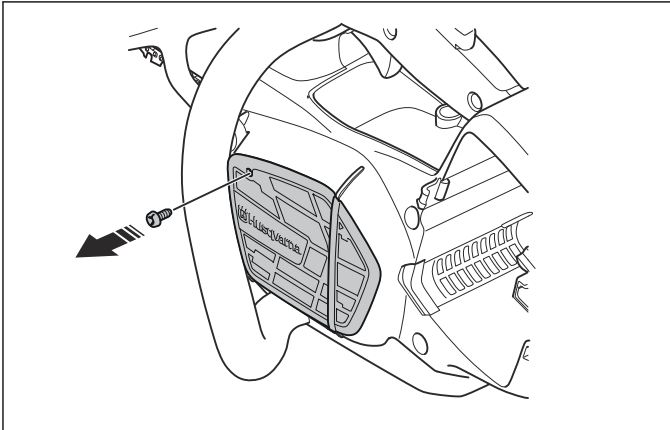


4. Assemble in the opposite sequence.

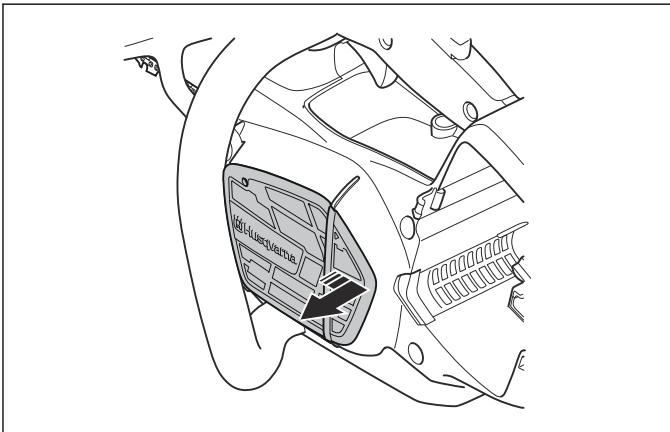
5.4 Crankcase

5.4.1 To remove and install the air intake cover

1. Remove the screw.

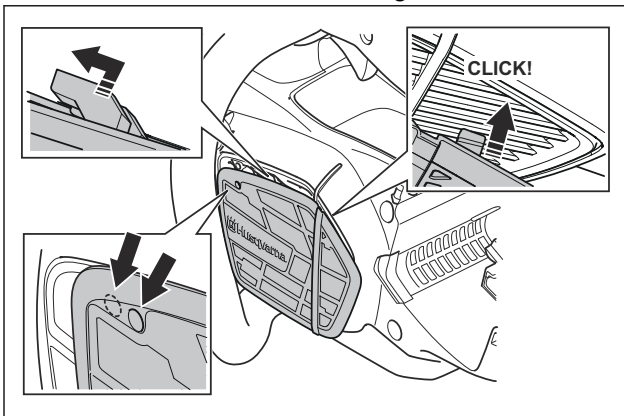


2. Push the air intake cover to the rear and carefully pull out the air intake cover.



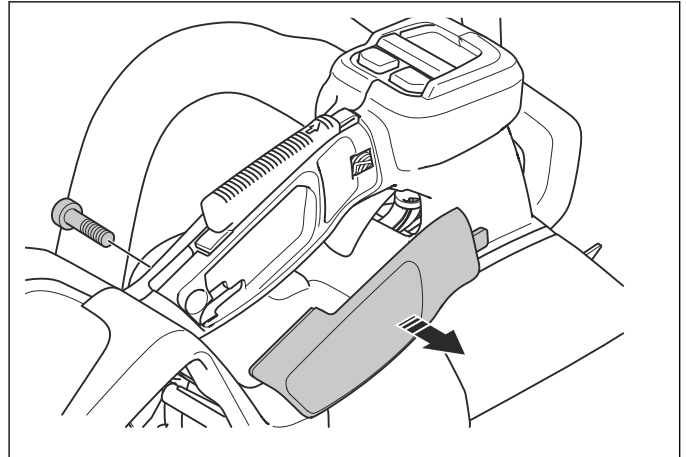
3. Install in the opposite sequence.

Note: Push the air intake cover against the crankcase until you hear a click. Push the air intake cover to the left until the holes align.



5.4.2 To remove and install the handle insert

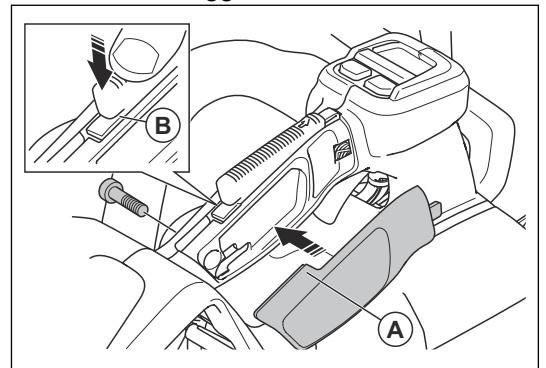
1. Remove the rear screw on the top handle and the handle insert.



2. Install in the opposite sequence.

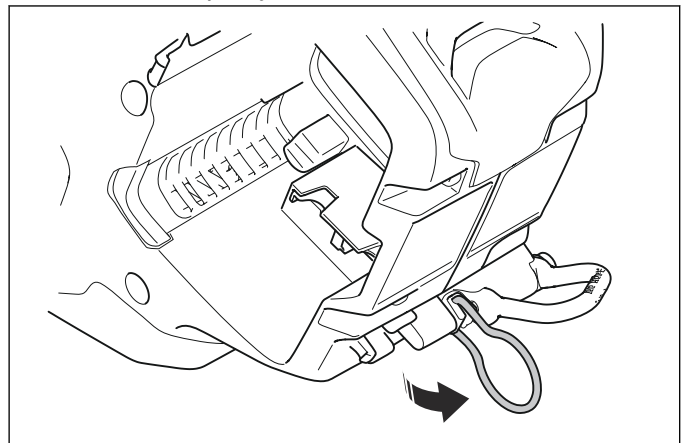


CAUTION: Make sure that the flange (A) on the handle insert is installed in the notch (B) on the throttle trigger lockout.

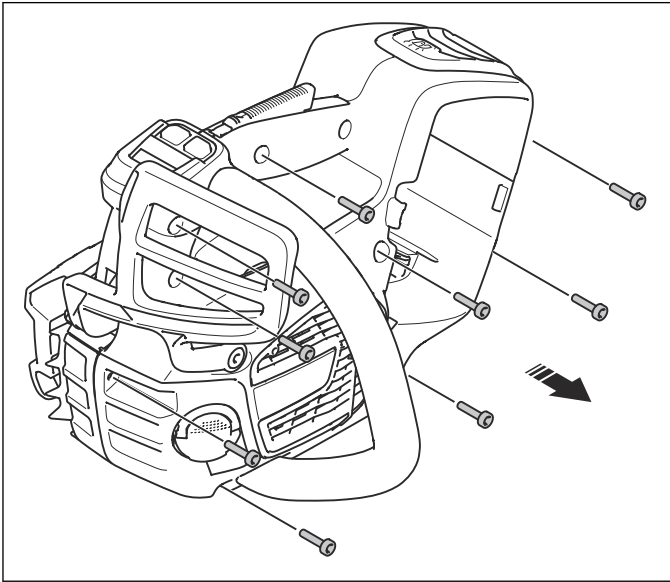


5.4.3 To disassemble and assemble the crankcase

1. Remove the handle insert. Refer to *To remove and install the handle insert on page 10*.
2. Move the front hand guard rearward to release the chain brake.
3. Unfold the rope eyelet.



- Remove the 9 screws.



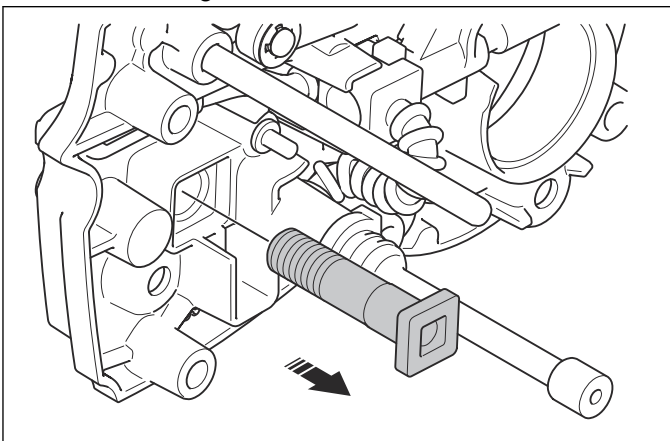
- Remove the left crankcase half.
- Assemble in the opposite sequence.



CAUTION: Make sure that all parts are installed correctly in the crankcase to prevent damage to the cables.

5.4.4 To replace the guide bar bolt

- Remove the drive sprocket cover. Refer to *To remove and install the drive sprocket cover on page 8.*
- Remove the guide bar and the saw chain.
- Disassemble the crankcase. Refer to *To disassemble and assemble the crankcase on page 10.*
- Remove the chassis. Refer to *To remove and install the chassis on page 17.*
- Remove the guide bar bolt.

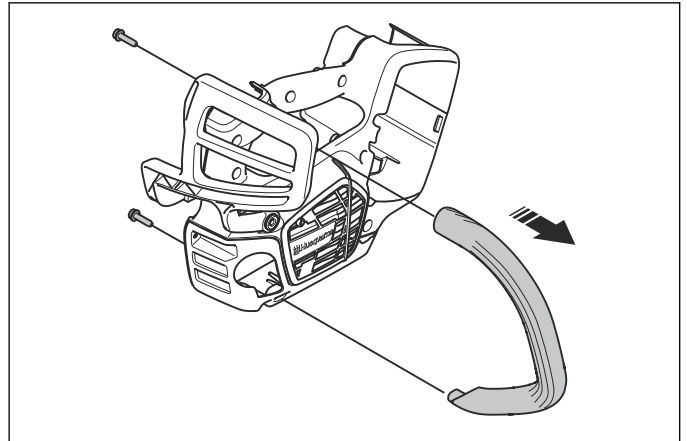


- Put the new guide bar bolt through the hole in the chassis.
- Use a hammer and a mandrel to install the new guide bar bolt.

- Install the chassis. Refer to *To remove and install the chassis on page 17.*
- Assemble the crankcase. Refer to *To disassemble and assemble the crankcase on page 10.*
- Install the guide bar and the saw chain.
- Install the drive sprocket cover. Refer to *To remove and install the drive sprocket cover on page 8.*

5.4.5 To remove and install the front handle

- Disassemble the crankcase. Refer to *To disassemble and assemble the crankcase on page 10.*
- Remove the 2 screws and the front handle.

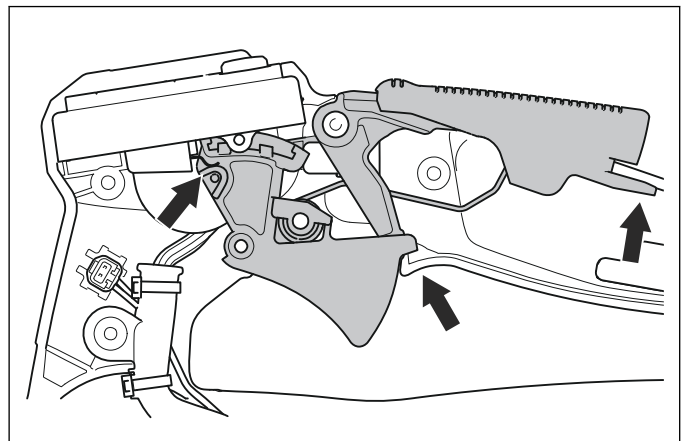


- Install in the opposite sequence.

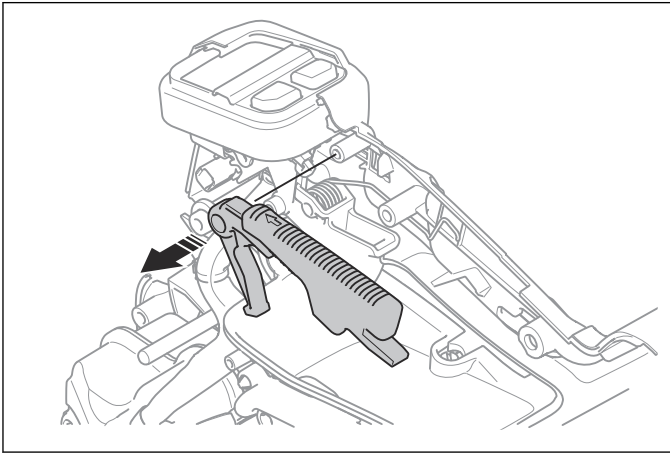
5.5 Power trigger

5.5.1 To disassemble the power trigger

- Disassemble the crankcase. Refer to *To disassemble and assemble the crankcase on page 10.*
- Make a note of how the inner parts of the top handle are installed.

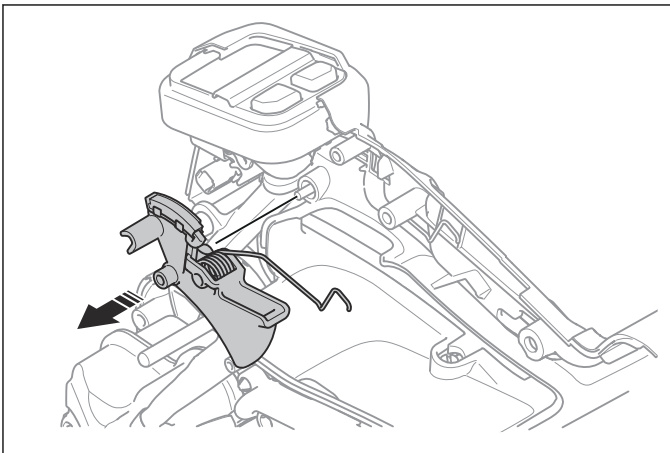


3. Remove the power trigger lockout.

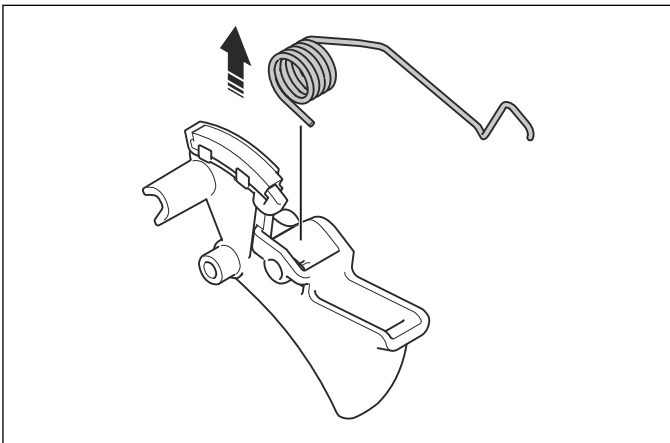


4. Make sure that the power trigger lockout has no defects. Replace the power trigger lockout if it has defects.

5. Remove the power trigger.



6. Pull out the recoil spring from the power trigger.

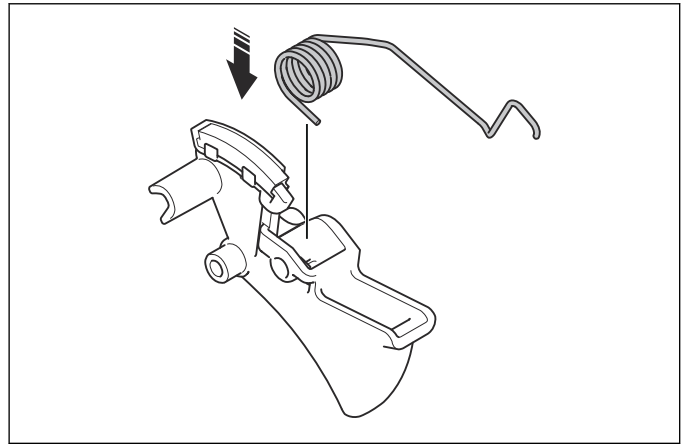


7. Make sure that there is tension in the recoil spring. Replace the recoil spring if it is necessary.

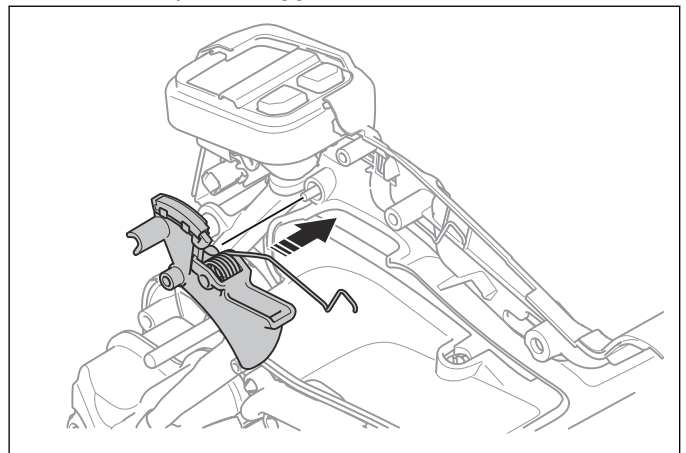
5.5.2 To assemble the power trigger

1. Make sure that there is tension in the recoil spring. Replace the recoil spring if it is necessary.

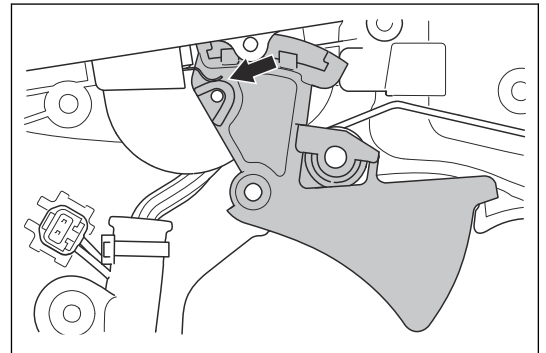
2. Pull out the recoil spring from the power trigger.



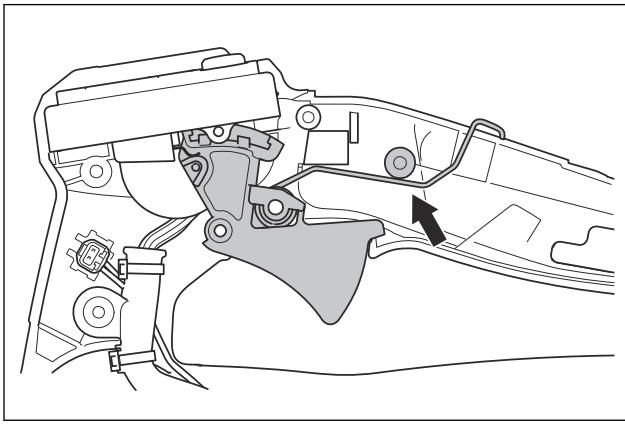
3. Install the power trigger.



CAUTION: Make sure that the switch lever is above the switch engage pin on the power trigger.



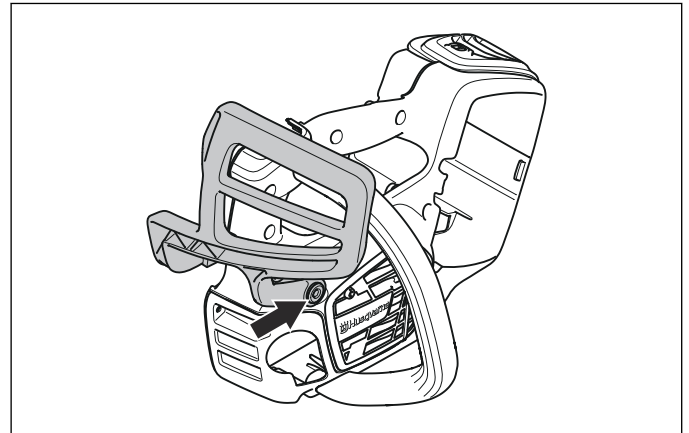
Note: Make sure that the recoil spring is below the plastic molding boss before you install the throttle trigger lockout.



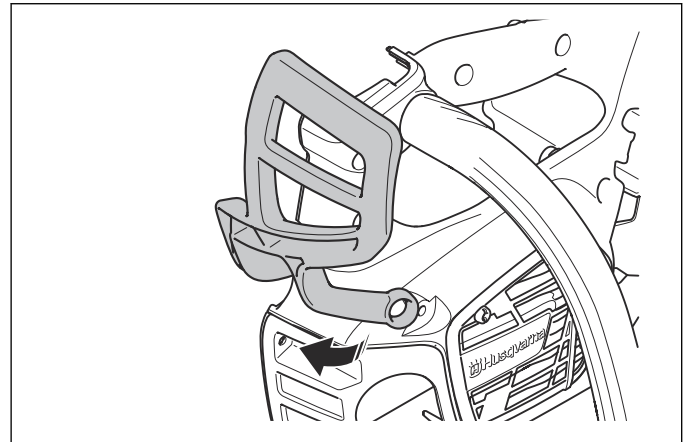
5.6 Front hand guard

5.6.1 To remove and install the front hand guard

1. Disassemble the crankcase. Refer to *To disassemble and assemble the crankcase on page 10*.
2. Remove the screw.



3. Carefully turn the front hand guard to remove it from the crankcase half.



4. Install in the opposite sequence.

5.7 Motor and control unit

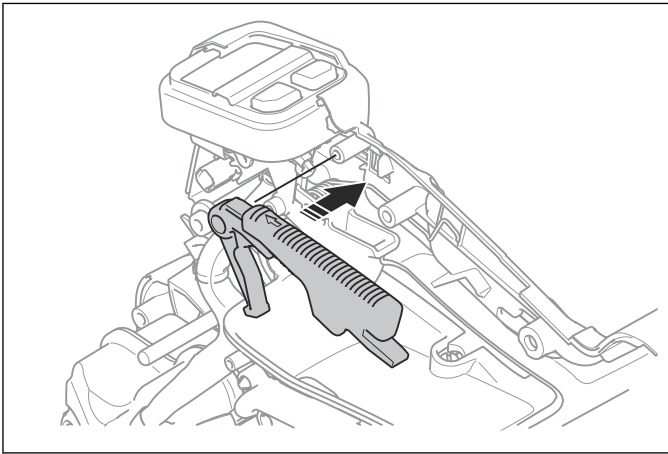
5.7.1 To remove the motor, control unit and battery connector



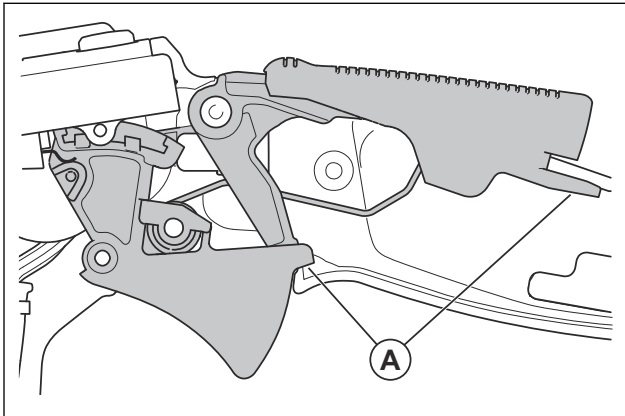
CAUTION: Do not pull the cables.

1. Remove the drive sprocket cover. Refer to *To remove and install the drive sprocket cover on page 8*.
2. Remove the drive sprocket. Refer to *To remove and install the drive sprocket on page 8*.
3. Remove the brake drum. Refer to *To remove and install the brake drum on page 8*.
4. Remove the worm gear. Refer to *To remove and install the worm gear on page 8*.

4. Make sure that the power trigger lockout has no defects. Replace the power trigger lockout if it is necessary.
5. Install the power trigger lockout.

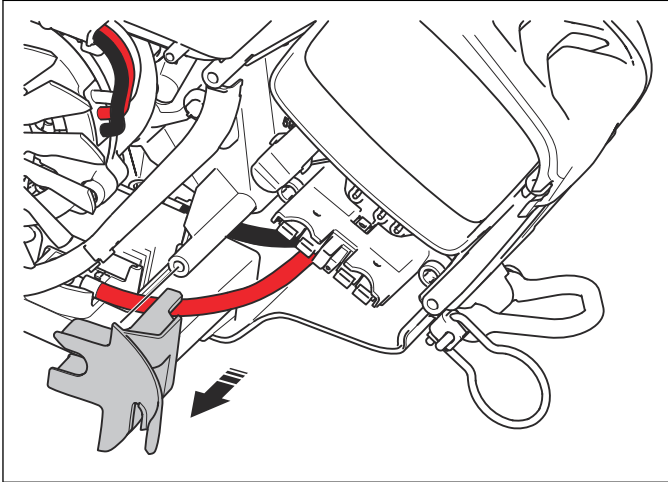


Note: Make sure that the edges (A) of the power trigger and the power trigger lockout are in the correct positions.

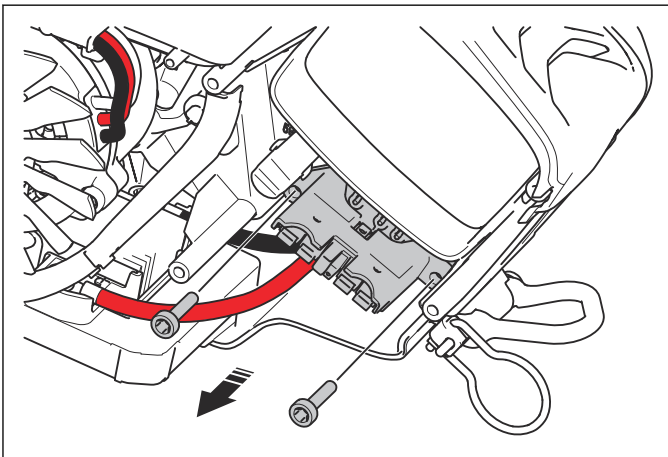


6. Assemble the crankcase. Refer to *To disassemble and assemble the crankcase on page 10*.

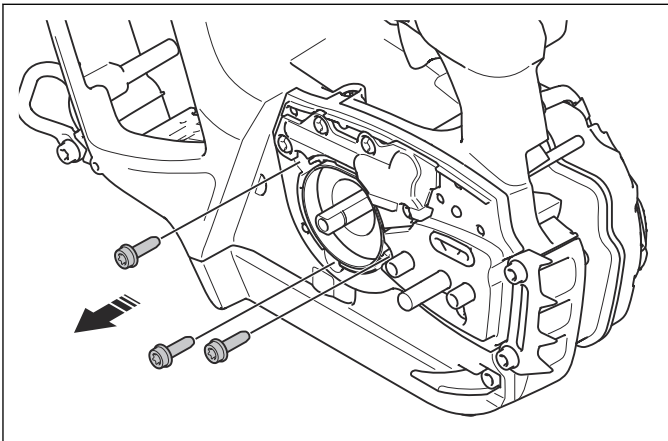
5. Disassemble the crankcase. Refer to *To disassemble and assemble the crankcase on page 10.*
6. Disassemble the power trigger. Refer to *To disassemble the power trigger on page 11.*
7. Remove the user interface. Refer to *To remove and install the user interface on page 16.*
8. Make a note of how the cables and parts are installed.
9. Remove the cable cover.



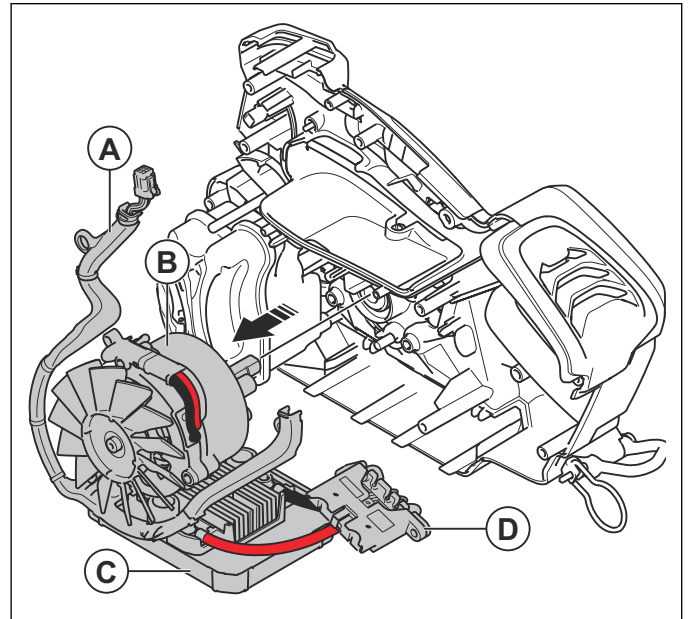
10. Remove the 2 screws on the battery connector.



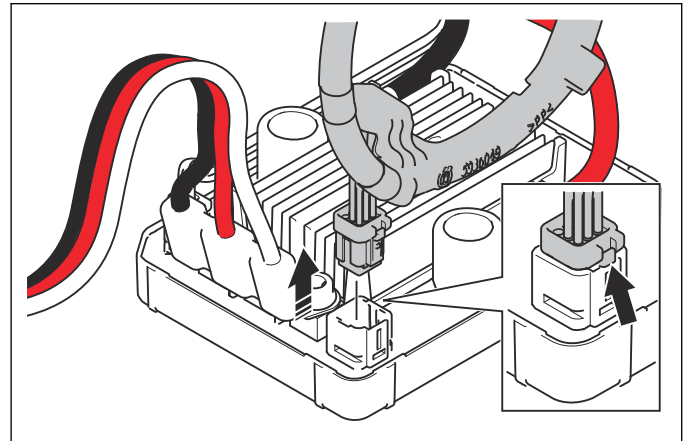
11. Remove the 3 screws and the motor unit.



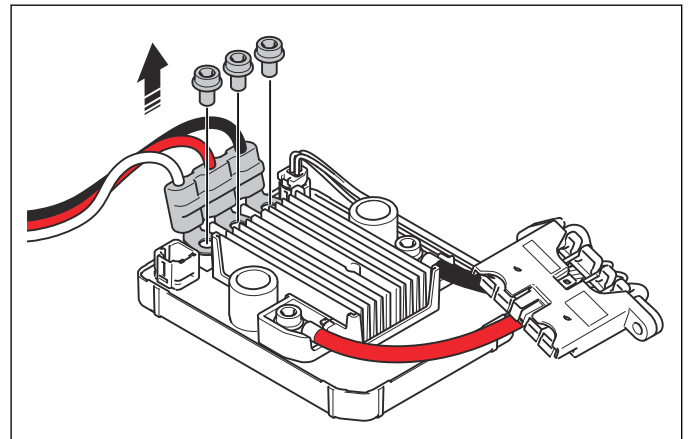
12. Remove the wire harness (A) motor (B), control unit (C) and battery connector (D) from the crankcase half.



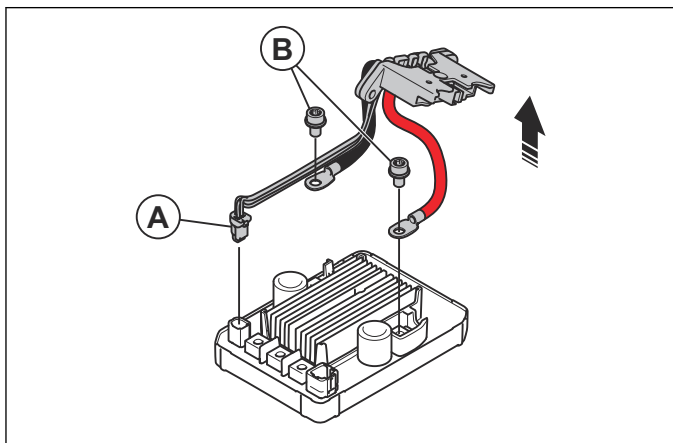
13. Disconnect the user interface connector from the control unit.



14. Remove the 3 screws and disconnect the motor cables from the control unit.



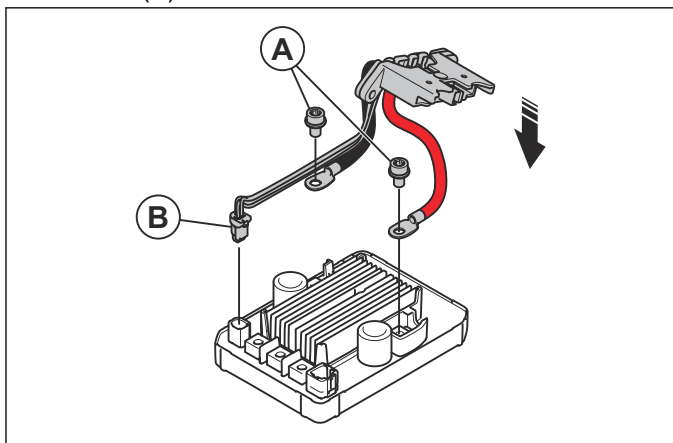
15. Disconnect the communication cable (A) from the control unit.



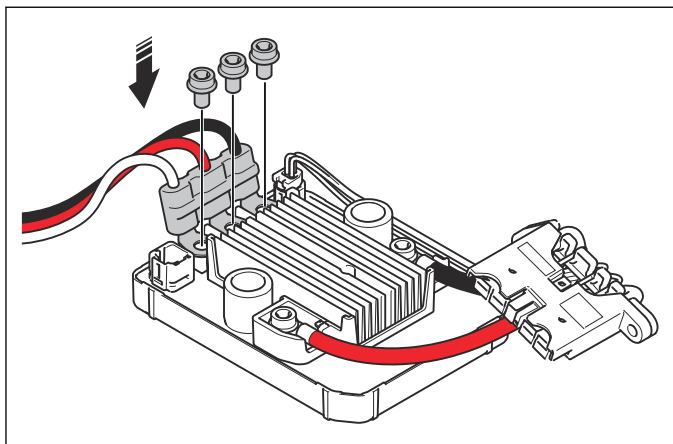
16. Remove the 2 screws (B) and the battery connector from the control unit.

5.7.2 To install the motor, control unit and battery connector

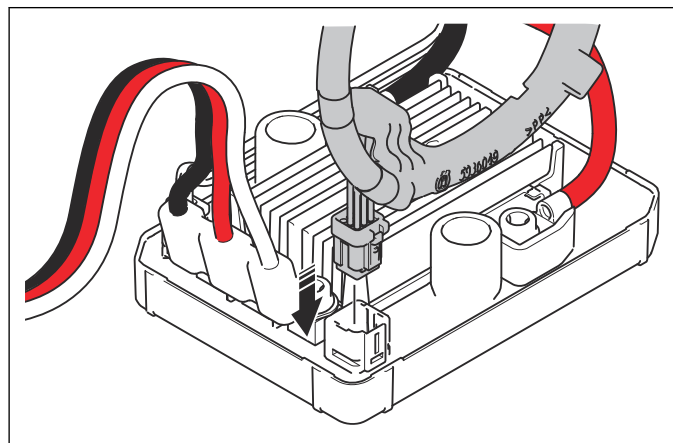
1. Install the battery connector cables with the 2 screws (A).



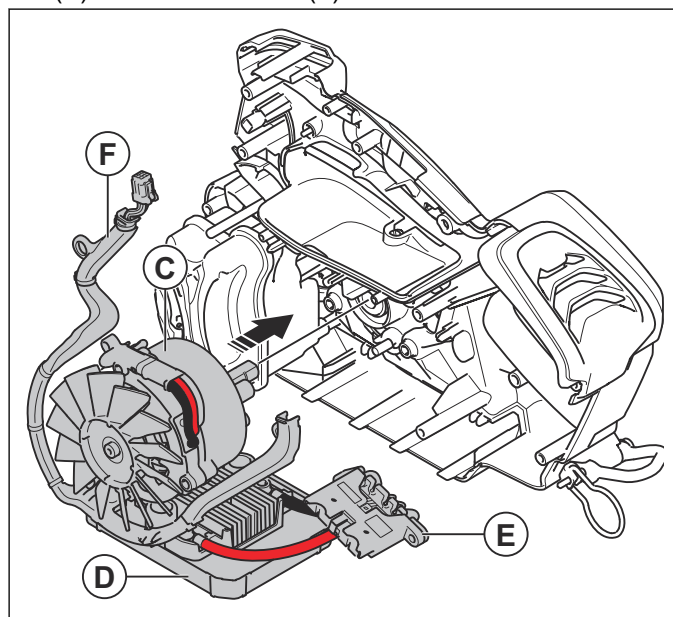
2. Connect the communication cable (B) to the control unit.
3. Install the motor cables on the control unit with the 3 screws.



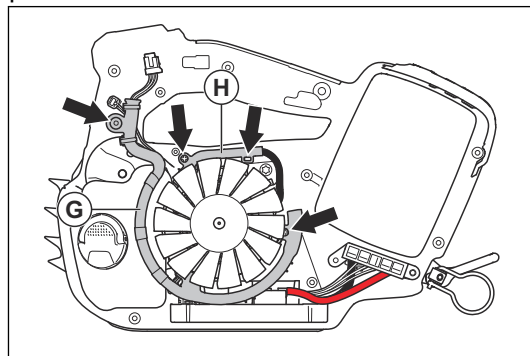
4. Connect the user interface connector to the control unit.



5. Put the motor (C), control unit (D), battery connector (E) and wire harness (F) into the crankcase half.

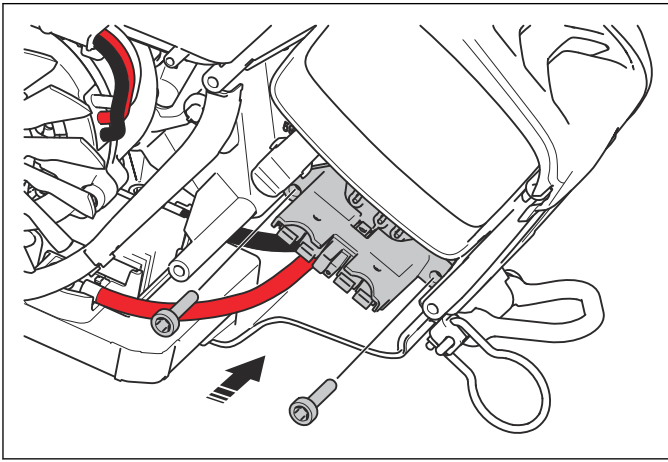


CAUTION: Make sure that the connection points on the wire harness (G) and the motor cable holder (H) are in the correct positions.

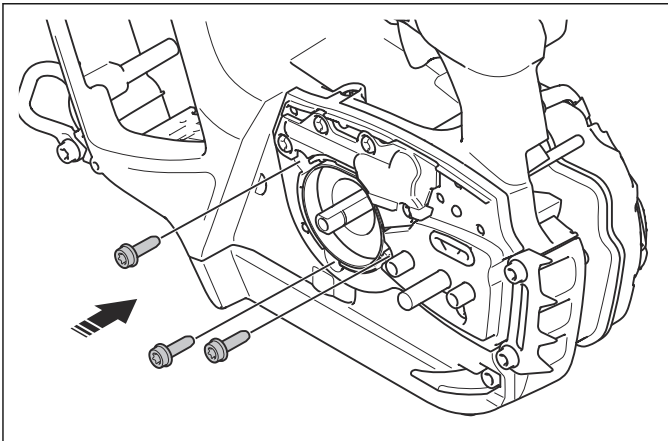


CAUTION: Make sure that the wire harness and the motor cable holder does not touch the fan.

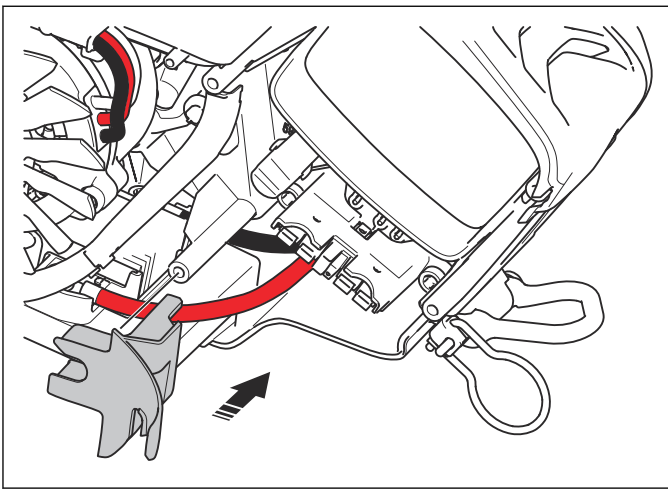
6. Hold the battery connector in position and install the 2 screws.



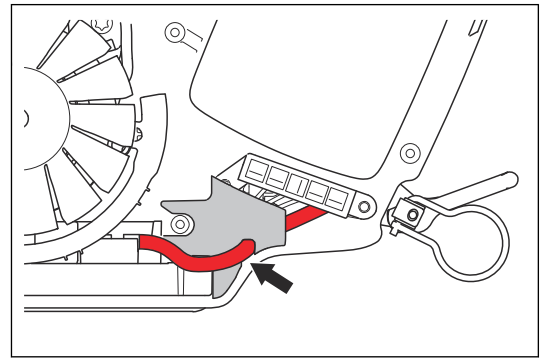
7. Hold the motor in position and install the 3 screws.



8. Install the cable cover.



CAUTION: Make sure that the battery connector cables are in the correct position.



9. Install the user interface. Refer to *To remove and install the user interface on page 16*.
10. Assemble the power trigger. Refer to *To assemble the power trigger on page 12*.
11. Assemble the crankcase. Refer to *To disassemble and assemble the crankcase on page 10*.



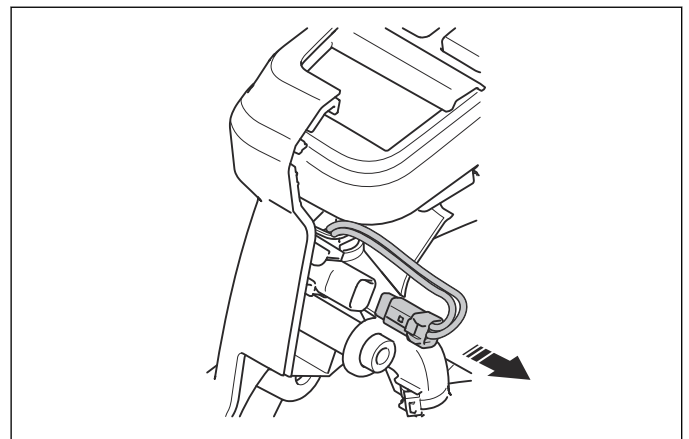
CAUTION: Make sure that all cables and parts are installed correctly before you assemble the crankcase.

12. Install the worm gear. Refer to *To remove and install the worm gear on page 8*.
13. Install the brake drum. Refer to *To remove and install the brake drum on page 8*.
14. Install the drive sprocket. Refer to *To remove and install the drive sprocket on page 8*.
15. Install the drive sprocket cover. Refer to *To remove and install the drive sprocket cover on page 8*.

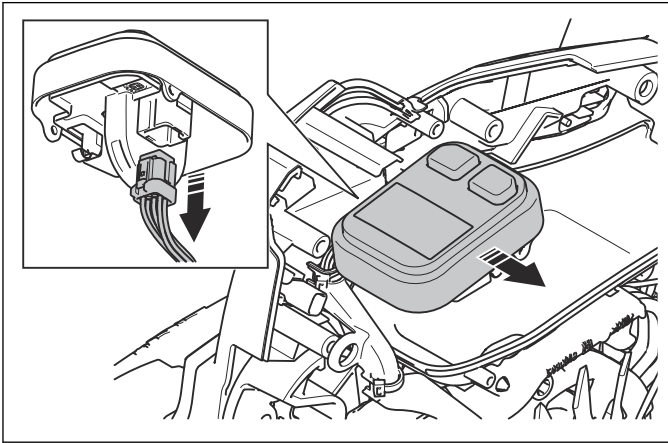
5.8 User interface

5.8.1 To remove and install the user interface

1. Disassemble the crankcase. Refer to *To disassemble and assemble the crankcase on page 10*.
2. Disassemble the power trigger and the power trigger lockout. Refer to *To disassemble the power trigger on page 11*.
3. Disconnect the chain brake sensor.



4. Pull out and disconnect the user interface.

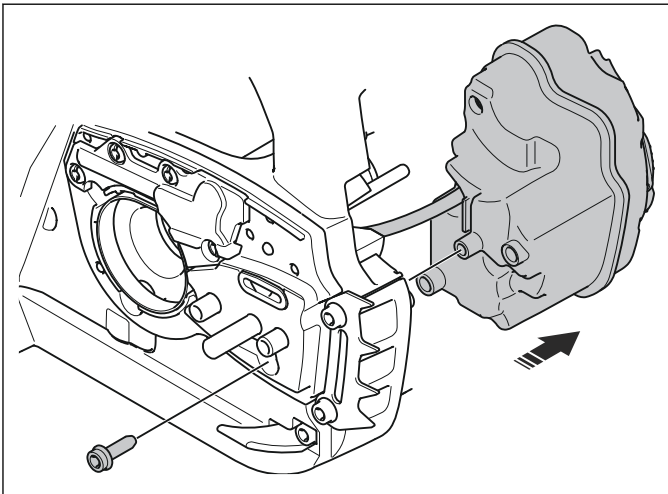


5. Install in the opposite sequence.

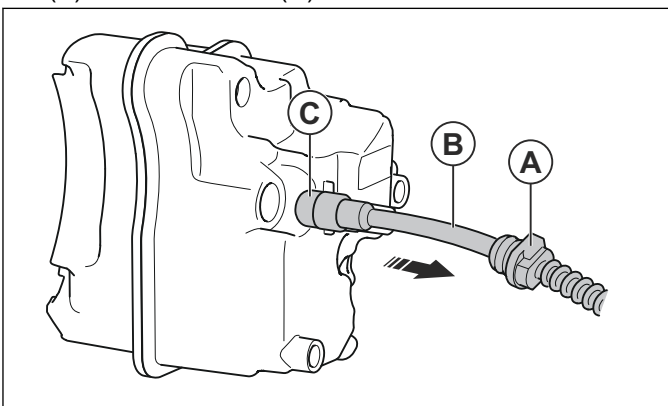
5.9 Chain oil tank

5.9.1 To remove and install the chain oil tank

1. Empty the chain oil tank.
2. Disassemble the crankcase. Refer to *To disassemble and assemble the crankcase on page 10*.
3. Remove the motor. Refer to *To remove the motor, control unit and battery connector on page 13*.
4. Remove the screw and pull out the chain oil tank from the crankcase.



5. Remove the grommet (A) and pull out the oil hose (B) and the oil filter (C).



6. Install in the opposite sequence.



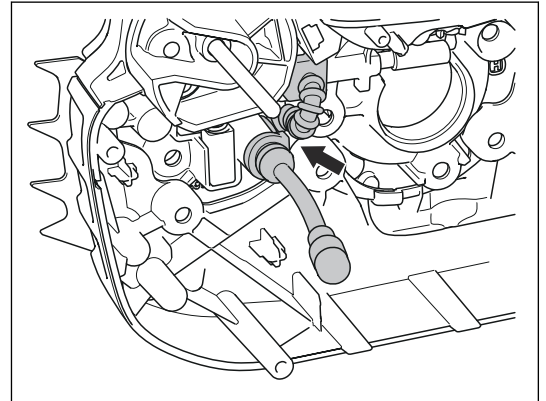
CAUTION: Make sure that the grommet is attached correctly to the chain oil tank.



CAUTION: Make sure that the oil filter is at the bottom of the chain oil tank when you install the chain oil tank.



CAUTION: Make sure that you push the oil hose into the dedicated slot in the crankcase when you install the chain oil tank.



5.10 Chain brake

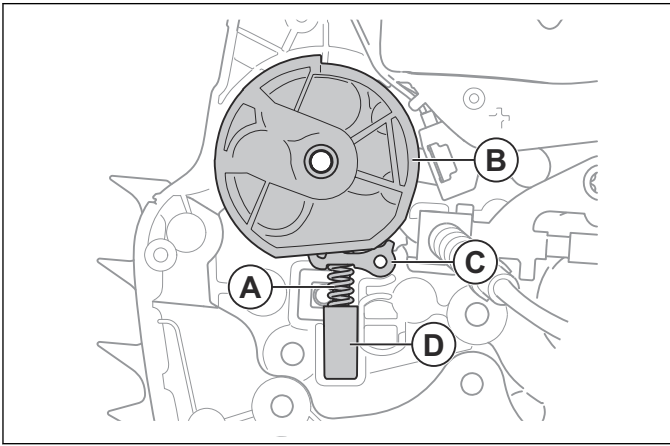
5.10.1 To remove and install the chassis



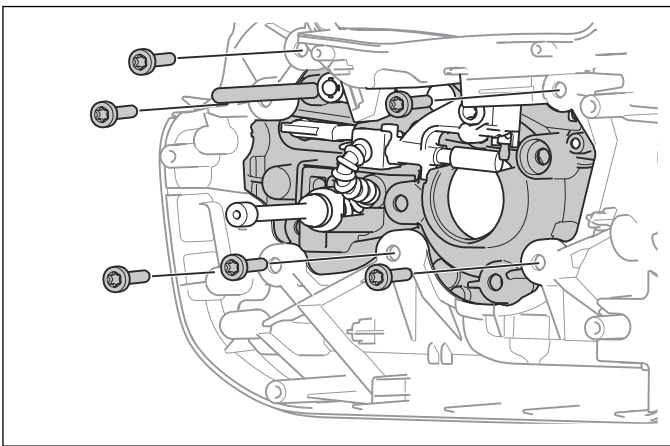
WARNING: Use protective glasses. The spring can eject and cause injury.

1. Disassemble the crankcase. Refer to *To disassemble and assemble the crankcase on page 10*.
2. Remove the motor, control unit and the battery connector. Refer to *To remove the motor, control unit and battery connector on page 13*.
3. Remove the chain oil tank. Refer to *To remove and install the chain oil tank on page 17*.

4. Hold your thumb on the spring (A) and carefully pull out the chain brake wheel (B).



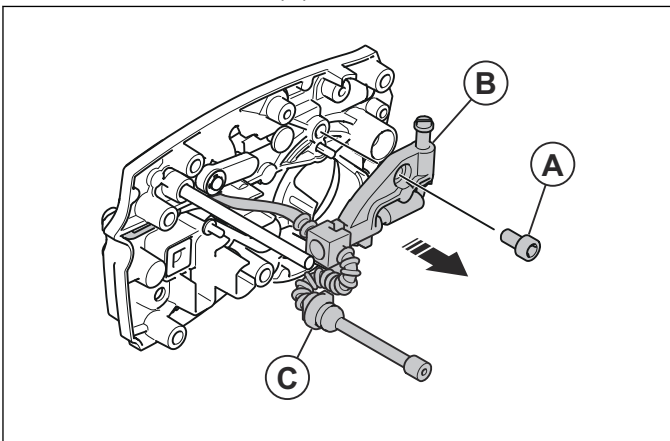
5. Carefully remove the lever (C), the spring and the spring retainer (D).
6. Remove the 6 screws and the chassis.



7. Install in the opposite sequence.

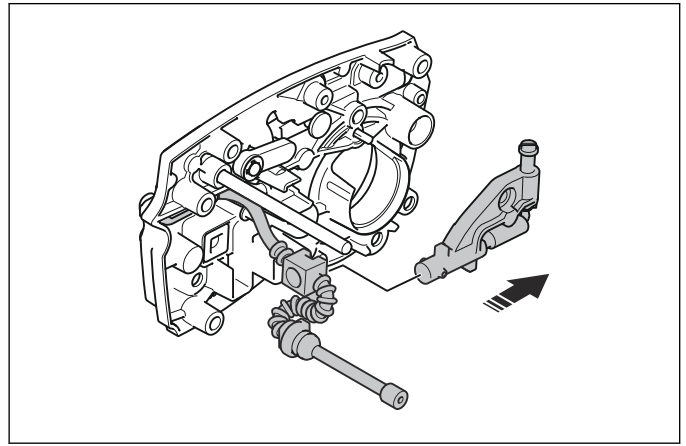
5.10.2 To remove and install the oil pump

1. Remove the chassis. Refer to *To remove and install the chassis on page 17*.
2. Remove the screw (A).

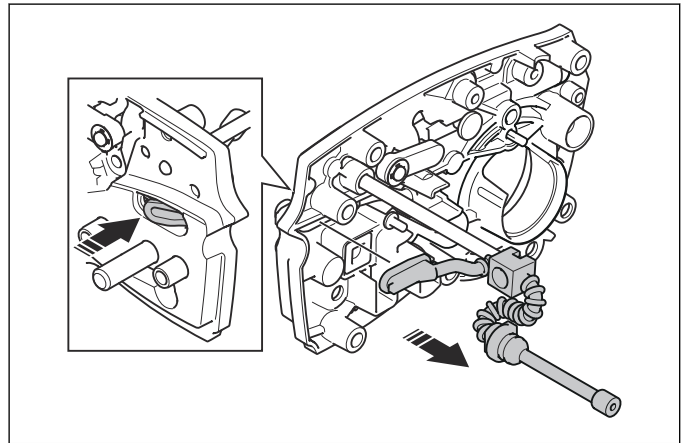


3. Remove the oil pump assembly (B) and the rubber hose (C).

4. Remove the oil pump assembly from the rubber hose.



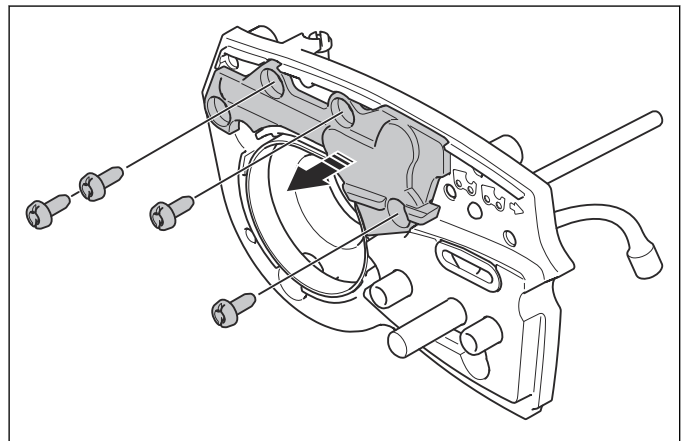
5. Remove the rubber hose from the opening in the chassis.



6. Install in the opposite sequence.

5.10.3 To disassemble and assemble the chain brake

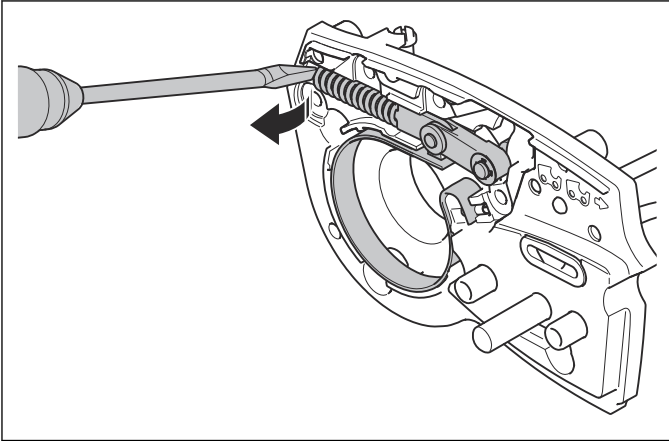
1. Remove the drive sprocket cover. Refer to *To remove and install the drive sprocket cover on page 8*.
2. Remove the guide bar and the saw chain.
3. Remove the chassis. Refer to *To remove and install the chassis on page 17*.
4. Remove the 4 screws and carefully remove chain brake cover.





WARNING: Use protective glasses. The chain brake spring can eject and cause injury.

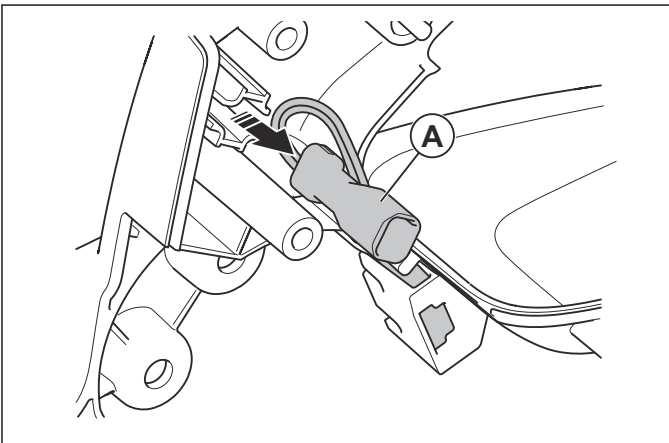
5. Use a screwdriver to carefully remove the spring.



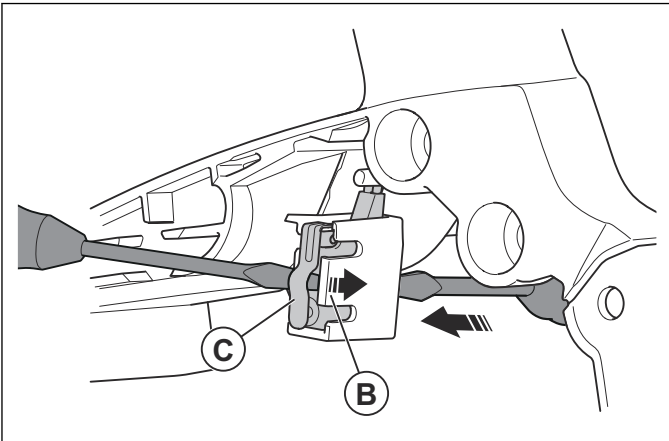
6. Assemble in the opposite sequence.

5.10.4 To remove and install the chain brake sensor

1. Remove the chassis. Refer to *To remove and install the chassis on page 17*.
2. Pull out the chain brake connector (A) and remove the cable.



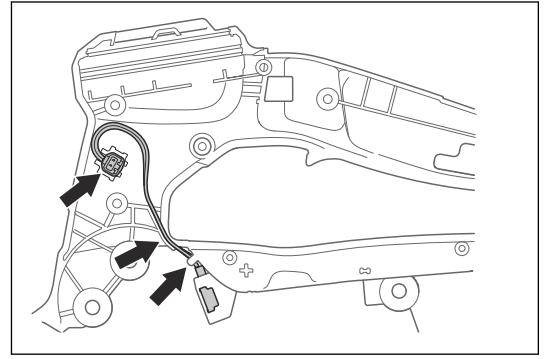
3. Use a screwdriver to bend the clip (B) to the side and push out the chain brake sensor (C).



4. Install in the opposite sequence.



CAUTION: Make sure the cable and chain brake connector are in the correct positions.



6 Troubleshooting

6.1 Diagnostic tools

6.1.1 Common service tool

The common service tool (CST) is used with a computer (not included) for Husqvarna products.

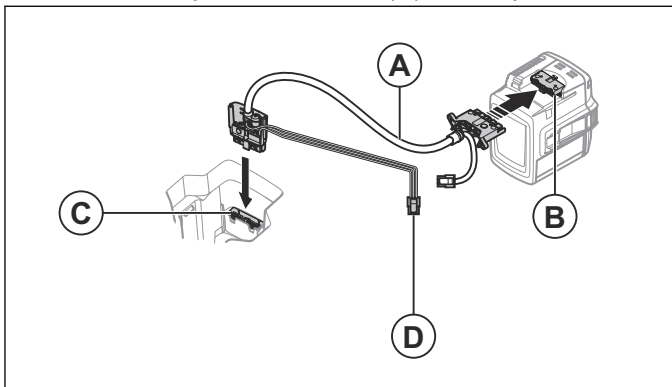
The common service tool transmits data from the product and battery to the computer, for example product ID. There is also a diagnostic tool list and a list of saved error codes. The common service tool is also used to update the software in battery products.

6.1.2 To connect the common service tool (CST)



CAUTION: If you install firmware to a new spare part, make sure that you know the Husqvarna identification number (HID). The identification number is found on the spare part.

1. Remove the battery from the product.
2. Connect the adapter cable (A) to the battery (B) and to the battery slot connector (C) on the product.



3. Start the product.
4. Connect the cable (D) to the common service tool (CST).
5. Obey the instructions on the common service tool (CST) and in the related chapter in this manual.



CAUTION: Do not disconnect the product until the update is completed.



WARNING: Do not push the power trigger. The motor can operate when the product is in servicing mode.

6.1.3 To do troubleshooting of the common service tool

If there is no signal to the common service tool when it is connected to the product, do the procedure that follows.

1. Make sure that the connectors on the battery and on the product are clean and not damaged. Replace the battery or control unit on the product if there is damage.
2. Make sure that the cable to the common service tool is clean and not damaged. Replace the cable if there is damage.
3. Restart the computer.
4. Install the software again.

6.2 Troubleshooting of the product

Symptom	Possible cause	Recommended step
The product does not start. No LEDs come on when you press the ON/OFF button.	Defective battery.	Press the ON/OFF button to do a check of the battery. A minimum of 1 green LED must come on.
	Defective plug between the battery and the product.	Make sure that the power connectors between the battery and the product are not dirty or damaged.
	Defective connection in the user interface connector.	Make sure that the user interface connector is correctly connected, dry, not damaged, and that there is no corrosion.
	Broken user interface.	Replace the user interface.
	Cables between the control unit and the user interface/main switch are damaged.	Repair or replace the cables if they are damaged.
	Short circuit in the control unit.	Replace the control unit.
The motor makes sudden movement when you push the power trigger but then stops.	Short circuit in the control unit.	Replace the control unit.
The product stops when you apply workload.	Defective connection in the user interface connector.	Make sure that the power connectors between the battery and the product are clean and not damaged.
	Defective or loose chain brake sensor.	Make sure that the chain brake sensor is correctly installed. Replace the chain brake sensor if it is damaged.
The lights on the user interface flash.	Defective connection in the user interface connector.	Make sure that the user interface connector is correctly connected, dry, not damaged, and that there is no corrosion.
	Short circuit in the user interface.	Replace the user interface.
The motor speed is irregular.	Defective connection in the signal connector of the main switch.	Make sure that the user interface connector is correctly connected, dry, not damaged, and that there is no corrosion.
	Damaged or worn main switch.	Replace the user interface.
A warning sign on the user interface flashes continuously.	Temperature is too high.	Wait for the product to become cool.
	Temperature of the control unit or the battery is too low.	Make sure that the product and the battery is not colder than -10° C.
	The front hand guard is caught in engaged position.	Disassemble the front hand guard and clean all parts.
A warning sign on the user interface flashes after the product is started and then the product stops.	The power trigger is pushed during start.	Do not push the power trigger when you start the product.
	Water in the signal connector of the main switch.	Disassemble and dry the signal connector and then assemble it.
	Short circuit in the user interface.	Replace the user interface.
	Short circuit in the main switch.	Replace the main switch.

Symptom	Possible cause	Recommended step
A warning sign on the user interface flashes after start.	Defective signal between the battery and the product.	Make sure that the power connectors between the battery and the product are clean and not damaged.
		Make sure that the small cables between the connector and the control unit are not loose or damaged.
A red triangle lights up on the user interface when the product starts but the front hand guard is not engaged.	Defective or loose chain brake sensor.	Make sure that the chain brake sensor is correctly installed. Replace the chain brake sensor if it is damaged.
	Defective cables between the user interface and the chain brake sensor.	Make sure that the cables and connections between the user interface and the chain brake sensor are not damaged. Replace damaged cables.
The product works but there is no indication light on the user interface.	Defective connection in the user interface connector.	Do a check of the user interface function with the common service tool. Make sure that the user interface connector is correctly connected, dry, not damaged, and that there is no corrosion.
	Defective user interface.	Replace the user interface.
The product starts immediately when you install the battery.	Short circuit in the user interface.	Replace the user interface.
A warning sign on user interface shows a red light.	Permanent error codes that prevent the operation of the product.	Erase the error codes in the common service tool.
	Defective control unit.	Replace the control unit.
The product shows red light after a new control unit is installed.	The control unit comes without software.	Use the common service tool to install the software.

6.3 Troubleshooting of the battery and battery charger

Symptom	Possible causes	Recommended step
No LEDs flash on the battery when you press the start button.	Defective battery.	Replace the battery.
A warning sign shows a constant red light on the battery when the start button is pressed.	Defective battery.	Replace the battery.
A warning sign flashes red on the battery when the start button is pressed.	Temperature is too high.	Wait until the battery has become cool (or insert in charger to let it become cool faster).
	Low voltage.	Charge the battery.
	Temperature too low.	Make sure that the battery temperature is higher than -10° C.
	Defective battery.	Replace the battery.
The battery shows less than 100% after a full charge. (Usually 96-97%).	Some ratio of the charge may be used up by the electronics.	None. The charger restarts when the charge level is less than 95%.
Charger does not start and no LEDs come on when the battery is attached.	Defective connection between charger and battery.	Make sure that the power plugs between the charger and the battery are clean and not damaged.
	Defective battery.	Check battery start.
	Defective charger.	Disconnect charger from the mains outlet for a minimum of 1 minute and then connect to the mains outlet again. Make sure that the fan starts and that the green LED comes on for approximately 3 seconds. If not, replace the charger.
A red warning sign flashes on the charger when the battery is attached.	Defective connection between charger and battery.	Make sure the power plugs between the charger and battery are not dirty or damaged.
	Battery temperature too high.	Let the battery become cool in the charger (1-5 min).
	Ambient temperature too low.	Make sure that the ambient temperature is above 5°C.
	Battery temperature too low.	Make sure that the battery temperature is higher than 5°C.
	Defective battery.	Make sure that the battery is in order by pressing the battery start button. A minimum of 1 green LED must come on. If not, replace the battery.
	Defective charger.	Disconnect charger from the mains outlet for a minimum of 1 minute and then connect to the mains outlet again. Make sure that the fan starts and that the green LED comes on for approximately 3 seconds. If not, replace the charger.
Solid red warning sign on charger when put into mains outlet.	Defective charger.	Replace the charger.
Solid red warning sign on charger during charging.	Defective charger.	Replace the charger.

Symptom	Possible causes	Recommended step
A green lamp on the charger comes on for approximately 5-10 seconds when the battery is attached. After that a red warning sign flashes on the charger. This sequence then occurs again.	Defective Battery.	Put the battery in a charger. If the same problem occurs, replace the battery.
	Defective charger.	Put a battery in the charger. If the same problem occurs, replace the charger.

7 Technical data

7.1 Technical data

Motor	
Type	BLDC (brushless) 36V
Features	
Low energy mode	savE
Lubrication system	
Type of oil pump	Adjustable
Oil tank capacity, liter/cm ²	0.18/180
Weight	
Chainsaw without battery, guide bar, saw chain and empty chain oil tank, kg	2.6
Water protection level	
IPX4	Yes
Noise emissions ¹	
Sound power level, measured dB(A)	101
Sound power level, guaranteed L _{WA} dB(A)	103
Sound levels ²	
Equivalent sound pressure level at the operator's ear, dB(A)	92
Vibration levels ³	
Front handle m/s ²	2.6
Rear handle m/s ²	2.6
Equivalent vibration levels ⁴	
Front handle m/s ²	2.2
Rear handle m/s ²	2.1
Saw chain/guide bar	
Recommended bar lengths, inch/cm	12-16/30-40
Usable cutting length, inch/cm	11-15/28-38
Type of drive sprocket/number of teeth	Spur/6 or 7
Maximum chain speed / (savE), m/s	24 (18)
Radio frequency data for	
Frequency band, GHz	2.4-2.4835

¹ Noise emissions in the environment measured as sound power (L_{WA}) in conformity with EC directive 2000/14/EC.

² Equivalent sound pressure level, according to ISO 22868, is calculated as the time-weighted energy total for different sound pressure levels under various working conditions. Typical statistical dispersion for equivalent sound pressure level is a standard deviation of 1 dB (A).

³ Vibration level, according to EN 60745-2-13. Reported data for vibration level has a typical statistical dispersion (standard deviation) of 1 m/s². Declared vibration data from measurements when the machine is fitted with a bar length and recommended chain type. If the machine is fitted with a different bar length, the vibration level may vary by max ± 1.5 m/s².

⁴ Equivalent vibration level is measured and calculated as for combustion engine powered chainsaws. These figures are quoted to be able to compare vibration data regardless of type of engine according to ISO 22867:2011.

Output power, max dBm	0
-----------------------	---

7.1.1 Approved batteries and chargers

Only use Husqvarna original batteries and chargers for this product.

Information about approved batteries and chargers is found in the Husqvarna accessories guide.



www.husqvarna.com

1141542-26

2019-12-13